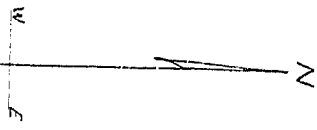
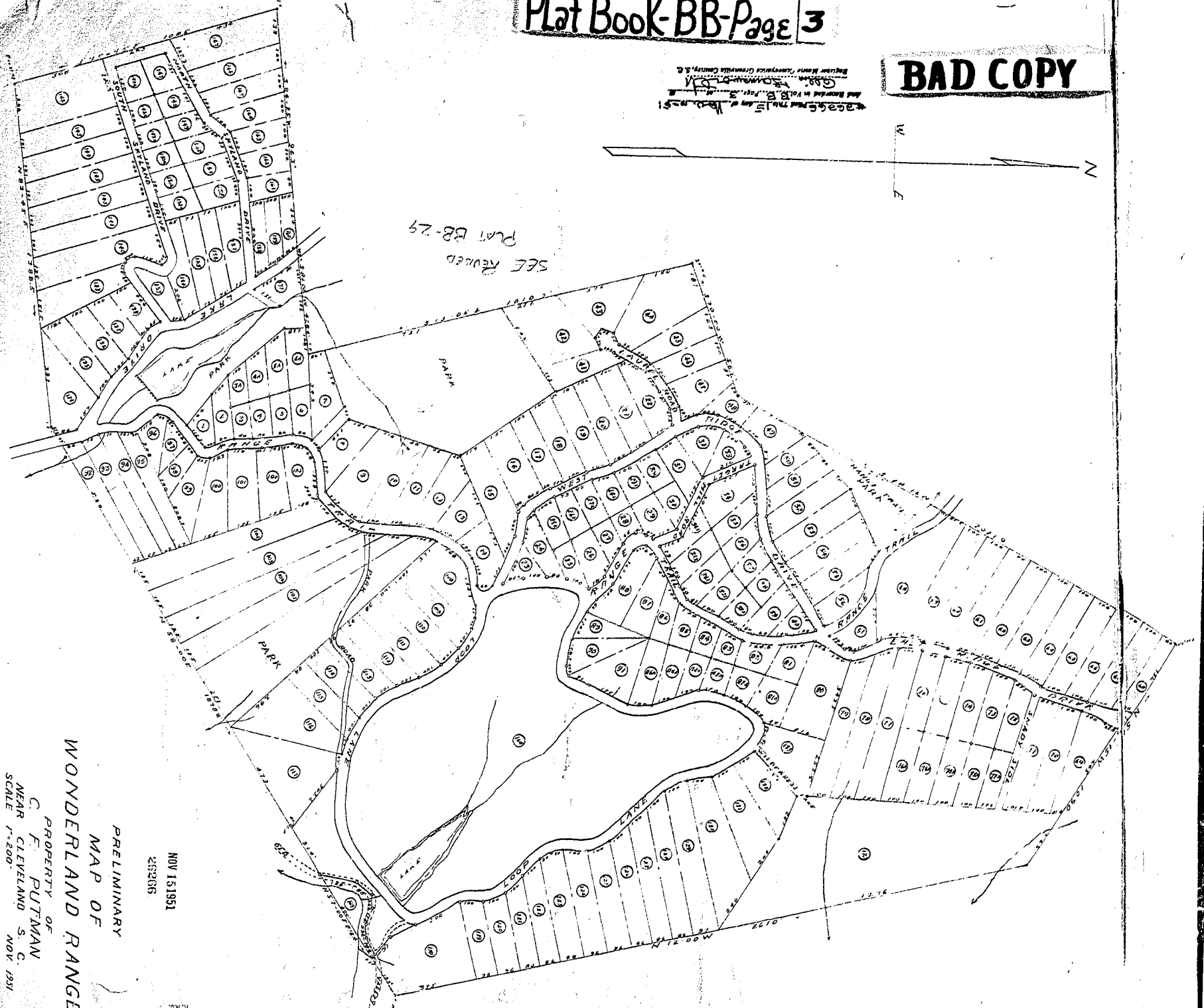


**BAD COPY**

As shown on this map of  
and located in Vol. B.B. Page 3  
of the  
Official Record of  
Deeds of  
Cuyahoga County, O.



SEE REVISED  
PLAT BB-29



PRELIMINARY  
MAP OF  
WONDERLAND RANGE

PROPERTY OF  
F. PUTMAN  
NEAR CLEVELAND  
SCALE 1"=200'  
NOV 1931

NOV 15 1931  
282966

PREVAILLE CO. S. S. O.  
NOV 15 10 40 AM 1931  
O. L. E. F. H. S. W. O. R. I. I.